

## Blackpool Victoria Hospital Emergency Department

### Monthly Bulletin: April 2007 to March 2008

This bulletin provides a breakdown of all attendances<sup>i</sup> at Blackpool Victoria Hospital Emergency Department (ED) between April 2007 and March 2008.

Between April 2007 and March 2008 there were 89,085 attendances to Blackpool Victoria Hospital ED. The month with the highest attendance was July with 8,027 attendances (**Figure 1**). There were more male than female attendances presenting at Blackpool Victoria Hospital ED (males=46,934; 53%).

**Figure 2** illustrates age group of ED attendances for each month. The majority of ED attendances were aged 30-59 (n=29,145; 33%) and 27% of attendances were over 60 years old (n=23,730). Most ED attendances were self-referred (58%) or referred by an emergency call/ambulance (30%) (**Table 1**).

**Table 2** details the injury group of ED attendances. The majority (88%) of attendances were recorded as other injury. Sports injury accounted for 3% of attendances, road traffic collisions (RTC) 3% and assaults 3%.

**Table 3** shows the location of incident for ED attendances. It shows that more than half of incidents occurred in the home (56%), and a fifth (20%) occurred in public places.

The discharge destination for ED attendances is displayed in **Table 4**. It indicates that over a third

(34%) of attendances were discharged with no follow-up treatment. A quarter (25%) of attendances were discharged into the care of their GP and 20% were admitted into hospital.

#### Assault attendances

Between April 2007 and March 2008 there were 2,722 assault attendances to Blackpool Victoria Hospital ED. The month with the highest attendance was May with 256 attendances (**Figure 3**). There were more male than female assault attendances presenting at Blackpool Victoria Hospital ED (males=2,055; 76%).

**Table 5** details the age group of assault attendances for each month. The majority of ED assault attendances were aged 15-29 (n=1,463; 54%) and 38% were 30-59 years old (n=1,039).

**Table 6** shows the location of incident for assault attendances. It shows more than half (52%) occurred in a public place, with one in five (20%) occurring in the home.

**Table 7** illustrates the general discharge destination for assault attendances to Blackpool Victoria Hospital ED. More than four in ten (43%) were discharged without follow-up treatment; 41% required follow-up treatment (41%). Just under one in twenty (4%) assault attendances were admitted to hospital.

Figure 1: Gender of ED attendances by month, April 2007 to March 2008

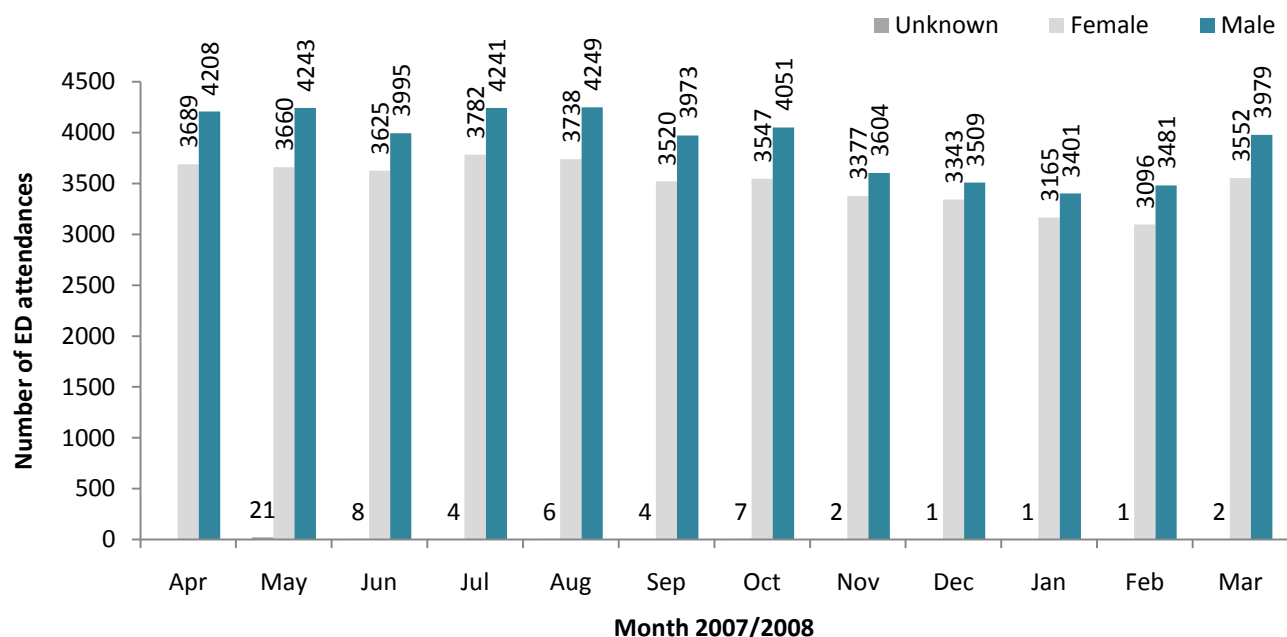


Figure 2: Age group of ED attendances by month, April 2007 to March 2008

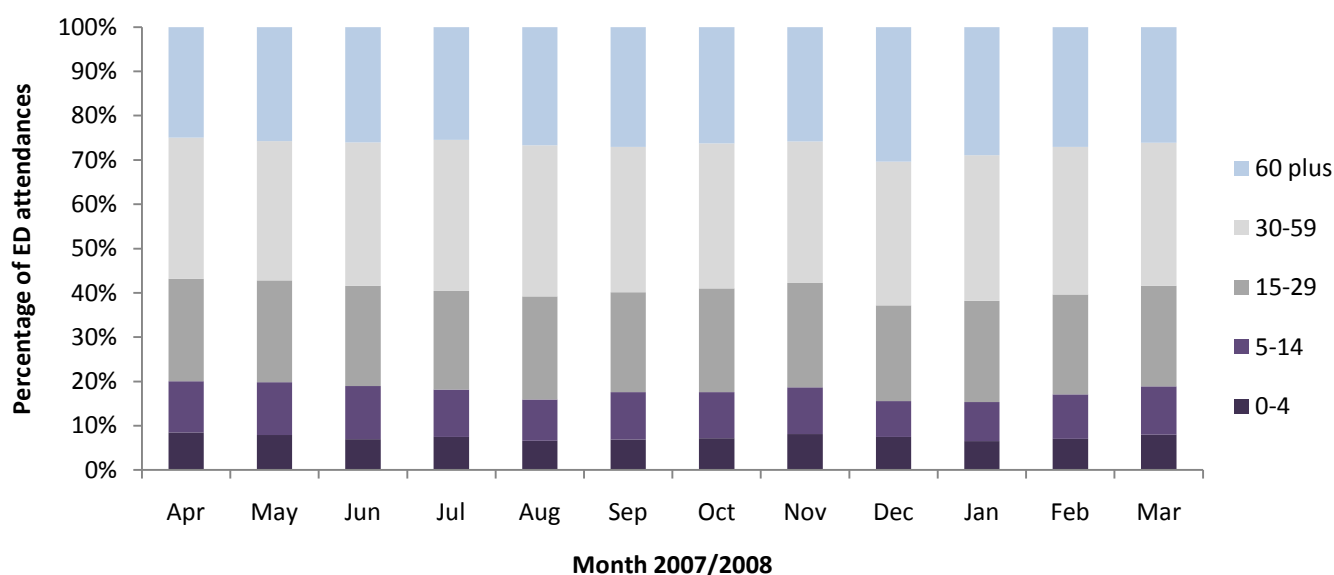


Table 1: ED attendances by source of referral and month, April 2007 to March 2008<sup>23</sup>

Source of referral	Apr	May	Jun	Jul	Aug	Sep	Oct	Nov	Dec	Jan	Feb	Mar	Total	%
Self referral	4644	4558	4473	4775	4819	4446	4403	3985	3607	3687	3752	4363	51512	58
Emergency call/ambulance	2254	2346	2209	2271	2290	2228	2261	2068	2325	2068	2134	2297	26751	30
Other referrer	284	258	216	189	194	183	204	192	227	183	151	201	2482	3
GP	192	183	188	224	154	124	157	160	151	138	113	132	1916	2
Walk-in centre	143	146	158	176	181	162	150	135	125	130	98	125	1729	2
Employer	84	84	76	100	93	71	103	110	85	83	71	87	1047	1
Police	80	86	71	69	65	70	64	73	74	70	53	71	846	1
Educational establishment	47	85	75	46	***	53	73	103	64	48	55	71	721	1
NHS Direct	49	59	50	54	46	64	75	62	60	74	61	57	711	1
FCMS	51	45	52	41	54	45	48	50	73	42	45	69	615	1
ED staff	44	42	24	39	50	25	32	27	32	20	24	30	389	0
Other hospital	20	19	27	27	30	18	22	15	19	16	14	21	248	0
Prison service	***	10	***	5	5	***	6	***	***	5	***	***	52	0
LA/social services	***	***	***	5	8	***	***	***	***	***	***	***	33	0
Optician	***	***	***	6	***	***	***	***	***	***	***	***	33	0
Total	7897	7924	7628	8027	7993	7497	7605	6983	6853	6567	6578	7533	89085	100

**Table 2: ED attendances by injury group and month, April 2007 to March 2008<sup>4</sup>**

Patient group	Apr	May	Jun	Jul	Aug	Sep	Oct	Nov	Dec	Jan	Feb	Mar	Total	%
Other injury	6974	6957	6809	7198	7106	6606	6620	6059	6176	5880	5780	6584	78749	88
Sports injury	305	327	199	184	230	314	329	332	149	176	250	314	3109	3
Assault	240	256	230	241	244	221	244	204	198	196	193	255	2722	3
RTC	213	186	221	209	220	192	254	229	200	156	203	195	2478	3
Overdose	138	156	134	158	159	129	137	136	104	131	122	149	1653	2
Deliberate self-harm	27	42	35	37	34	35	21	23	26	28	30	36	374	0
<b>Total</b>	<b>7897</b>	<b>7924</b>	<b>7628</b>	<b>8027</b>	<b>7993</b>	<b>7497</b>	<b>7605</b>	<b>6983</b>	<b>6853</b>	<b>6567</b>	<b>6578</b>	<b>7533</b>	<b>89085</b>	<b>100</b>

**Table 3: ED attendances by location of incident and month, April 2007 to March 2008**

Location	Apr	May	Jun	Jul	Aug	Sep	Oct	Nov	Dec	Jan	Feb	Mar	Total	%
Home	4408	4351	4101	4292	4199	4018	4058	3913	4141	4116	3842	4470	49909	56
Public place	1732	1531	1600	1717	1955	1589	1625	1274	1137	1004	1192	1436	17792	20
Other	1227	1400	1297	1407	1447	1300	1225	1086	1061	894	979	959	14282	16
Workplace	365	361	370	427	384	364	439	391	328	350	339	378	4496	5
Educational establishment	165	281	259	184	7	226	258	319	186	203	225	290	2603	3
Unknown	***	***	***	***	***	***	***	***	***	***	***	***	3	0
<b>Total</b>	<b>7897</b>	<b>7924</b>	<b>7627</b>	<b>8027</b>	<b>7992</b>	<b>7497</b>	<b>7605</b>	<b>6983</b>	<b>6853</b>	<b>6567</b>	<b>6577</b>	<b>7533</b>	<b>89085</b>	<b>100</b>

**Table 4: ED attendances by discharge destination and month, April 2007 to March 2008<sup>5</sup>**

Discharge destination	Apr	May	Jun	Jul	Aug	Sep	Oct	Nov	Dec	Jan	Feb	Mar	Total	%
Discharged - no follow-up	2686	2718	2618	2571	2767	2504	2569	2459	2281	2112	2136	2475	29896	34
Refer to GP	1903	1892	1794	2077	1882	1763	1883	1721	1661	1770	1644	1930	21920	25
Admissions	1522	1586	1478	1574	1588	1573	1481	1368	1583	1414	1430	1553	18150	20
Fracture clinic	567	536	512	547	558	522	506	436	388	410	393	415	5790	6
ED clinic	301	265	310	297	248	277	276	248	188	171	232	279	3092	3
Out-patient department	237	258	242	283	275	230	267	237	241	239	265	266	3040	3
Did not wait	307	287	300	263	252	259	252	198	188	160	191	248	2905	3
Own discharge	79	83	74	97	87	71	68	66	69	54	73	60	881	1
Transfer to other hospital	37	46	35	37	42	35	49	30	45	37	45	59	497	1
Physiotherapist	45	49	54	46	43	46	44	45	24	26	30	33	485	1
Left - before treatment	26	38	25	49	32	35	30	39	31	25	14	32	376	0
Follow up at local hospital	32	31	33	35	56	37	44	19	12	13	15	36	363	0
Practice nurse	37	17	19	15	21	19	25	17	24	16	10	25	245	0
Community psychiatric nurse	9	12	20	20	16	21	26	25	16	16	16	19	216	0
Dentist	20	6	11	19	21	13	19	8	17	17	11	14	176	0
Left - refused treatment	7	9	19	15	22	22	10	6	24	12	11	15	172	0
Mortuary	12	14	7	11	15	11	10	15	***	16	19	16	150	0
Removed by police	12	10	20	15	13	12	9	8	15	9	***	18	144	0
DVT practitioner	13	11	12	16	17	6	***	8	9	9	8	***	117	0
District nurse	9	16	9	7	9	8	12	***	8	8	5	13	108	0
Not registered with GP	12	7	10	10	5	10	9	8	***	14	7	6	102	0
Other	11	16	11	11	10	8	7	***	5	***	11	***	98	0
Health visitor	5	10	***	5	7	5	***	8	***	6	***	8	67	0
Social services	***	***	8	***	5	8	***	6	***	5	5	6	56	0
FCMS	5	***	***	***	***	***	***	***	13	5	***	***	39	0
Alcohol liaison service	***	***	***	***	***	***	***	***	***	***	***	***	***	0
<b>Total</b>	<b>7897</b>	<b>7924</b>	<b>7628</b>	<b>8027</b>	<b>7993</b>	<b>7497</b>	<b>7605</b>	<b>6983</b>	<b>6853</b>	<b>6567</b>	<b>6578</b>	<b>7533</b>	<b>89085</b>	<b>100</b>

## Assaults

Figure 3: Number of ED assault attendances by gender and month, April 2007 to March 2008

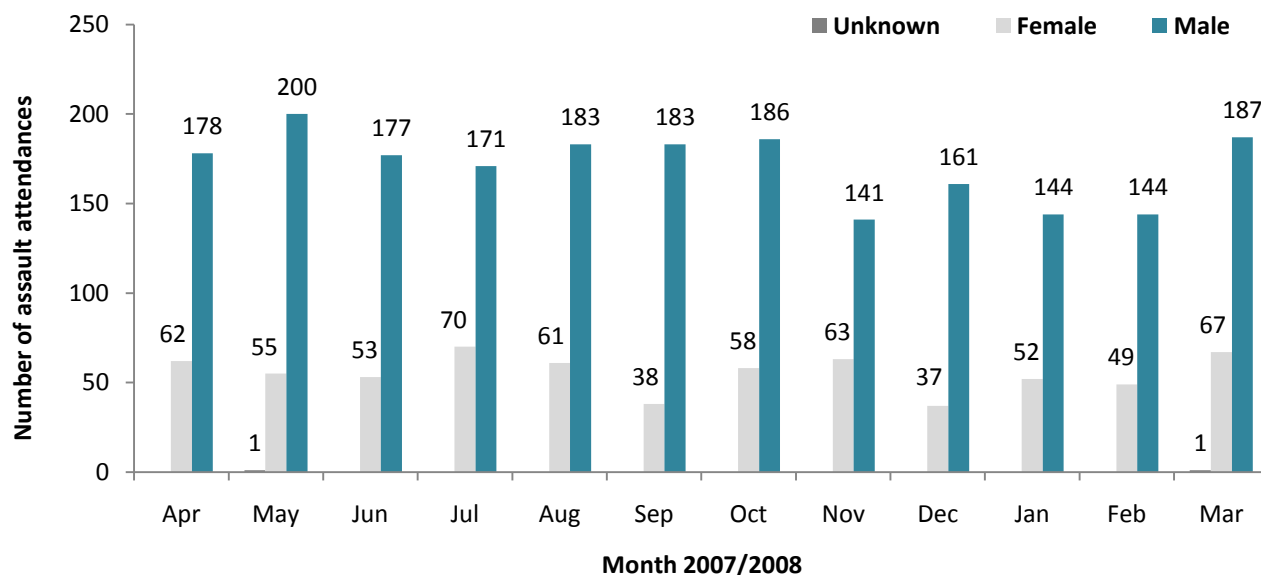


Table 5: ED assault attendances by age group and month, April 2007 to March 2008

Age group	Apr	May	Jun	Jul	Aug	Sep	Oct	Nov	Dec	Jan	Feb	Mar	Total	%
Unknown	***	***	***	***	***	***	***	***	***	***	***	***	***	0
0-4	***	***	***	***	***	***	***	***	***	***	***	***	6	0
5-14	12	16	18	15	9	15	18	11	5	8	16	16	159	6
15-29	146	139	131	118	133	114	122	99	108	105	113	135	1463	54
30-59	79	93	75	100	101	88	100	88	82	73	61	99	1039	38
60 plus	***	6	5	7	***	***	***	6	***	6	***	5	51	2
<b>Total</b>	<b>240</b>	<b>256</b>	<b>230</b>	<b>241</b>	<b>244</b>	<b>221</b>	<b>244</b>	<b>204</b>	<b>198</b>	<b>196</b>	<b>193</b>	<b>255</b>	<b>2722</b>	<b>100</b>

Table 6: ED assault attendances by location of incident and month, April 2007 to March 2008

Location	Apr	May	Jun	Jul	Aug	Sep	Oct	Nov	Dec	Jan	Feb	Mar	Total	%
Public place	117	123	120	131	135	131	143	95	89	84	104	147	1419	52
Other	70	70	57	56	49	51	48	54	47	42	37	42	623	23
Home	42	51	41	48	54	25	42	41	50	62	41	52	549	20
Workplace	8	6	5	***	6	9	6	7	7	5	6	10	79	3
Educational establishment	***	6	7	***	***	5	5	7	5	***	5	***	52	2
<b>Total</b>	<b>240</b>	<b>256</b>	<b>230</b>	<b>241</b>	<b>244</b>	<b>221</b>	<b>244</b>	<b>204</b>	<b>198</b>	<b>196</b>	<b>193</b>	<b>255</b>	<b>2722</b>	<b>100</b>

Table 7: ED assault attendances by discharge destination and month, April 2007 to March 2008

Discharge destination	Apr	May	Jun	Jul	Aug	Sep	Oct	Nov	Dec	Jan	Feb	Mar	Total	%
Discharged	83	116	111	105	102	92	111	87	88	82	80	103	1160	43
Follow-up	119	98	83	102	102	93	95	79	77	82	78	110	1118	41
Other	33	32	29	26	32	28	29	28	22	23	26	33	341	13
Admitted	5	10	7	8	8	8	9	10	11	9	9	9	103	4
<b>Total</b>	<b>240</b>	<b>256</b>	<b>230</b>	<b>241</b>	<b>244</b>	<b>221</b>	<b>244</b>	<b>204</b>	<b>198</b>	<b>196</b>	<b>193</b>	<b>255</b>	<b>2722</b>	<b>100</b>

Published July 2010

Johnathan Rooney (Lancashire TIIG Officer)

Centre for Public Health, Liverpool John Moores University, 3rd Floor, Henry Cotton Campus, Liverpool, L3 2ET

Tel: 0151 231 4500 Email: j.rooney@ljmu.ac.uk

Website: [www.tiig.info](http://www.tiig.info) (please note data requests should be made through the website)

<sup>i</sup> For other EDs, TIIG reports on injuries only. However, this report includes all attendances at Blackpool Victoria Hospital ED. This is due to the medical and injury attendances being categorised within the patient group 'other injury'.

injury groups amongst attendances at Aintree AED which makes it difficult to analyse injury attendances separately

<sup>2</sup> GP=general practitioner, LA=local authority and FCMS=Flyde Coast Medical Services Ltd

<sup>3</sup> Please note that all numbers less than five have been suppressed (with \*\*\*) in line with patient confidentiality; and if there is only one number less than five in a category then two numbers will be suppressed to prevent back calculations from totals.

<sup>4</sup> Due to low numbers firework injuries have been included under 'other injury'.

<sup>5</sup> DVT=deep vein thrombosis.